

# Talend Integration Suite

Talend Integration Suite is the first Open Source enterprise data integration solution, designed to support multi-user development, and to scale to the highest levels of data volumes and process complexity.

Talend Integration Suite is a subscription service that extends award winning Talend Open Studio with professional grade technical support and additional features to facilitate the work of large teams and industrialize enterprise-scale deployments.

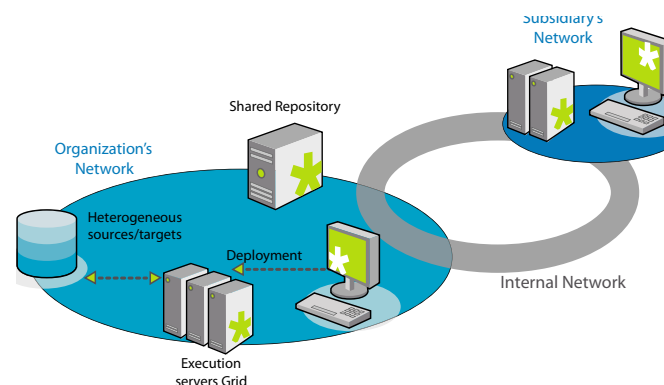
Talend Open Studio is the core of Talend Integration Suite. Its three main applications—**Business Modeler**, **Job Designer**, and **Metadata Manager**—constitute the primary work environment of business users and integration process developers.

## Teamwork and consolidation of development

Talend Integration Suite's **Shared Repository** is designed to consolidate all project information and enterprise metadata in a centralized repository shared by all stakeholders in the integration processes: business users, job developers, and IT operations staff—all of whom can access the same, single version of the truth. This shared repository facilitates collaboration between team members by allowing them to store and share their business models, integration jobs, and metadata.

This promotes reusability of objects and code, as well as facilitating the design of development best practices that can then be leveraged by all developers.

The Shared Repository features advanced collaboration capabilities that include object-level check-in and check-out, as well as users, roles, permissions & privileges management.



## Management of complex deployments

Talend Integration Suite incorporates powerful capabilities for managing all data integration deployments—from the simplest jobs to the most complex ones, from single jobs to thousands of jobs, and with data volumes ranging from a few records to terabytes of data.

- **Job Conductor** coordinates and schedules the execution of data integration jobs.

It provides a centralized execution interface from which all jobs can be started upon request or according to time-based schedules. Job Conductor automatically maps available execution servers and constantly monitors their resources to intelligently load balance the execution of jobs.

- **Job Conductor Advanced** adds event-based scheduling capabilities for real-time integration.
- **Grid Conductor** optimizes the scalability and availability of the integration processes by ensuring an optimal use of the execution grid, automatically distributing jobs across the grid.

With dynamic load balancing that constantly monitors the resources available on the execution servers, and an intelligent distribution of jobs, Grid Conductor guarantees that all jobs execute smoothly at all times and fully leverage available resources, removing bottlenecks created by the traditional single-server approach.

This alleviates any concern related to resource preemption when a large number of jobs run concurrently, or when non-dedicated servers are used. Grid Conductor also provides automatic fail-over in the event an execution resource becomes unavailable.

- **CPU Balancer** provides the highest degree of parallelization for the integration processes. It distributes jobs among all processing resources available, and parallelizes their execution between CPUs and cores. It also provides synchronization and wait points.

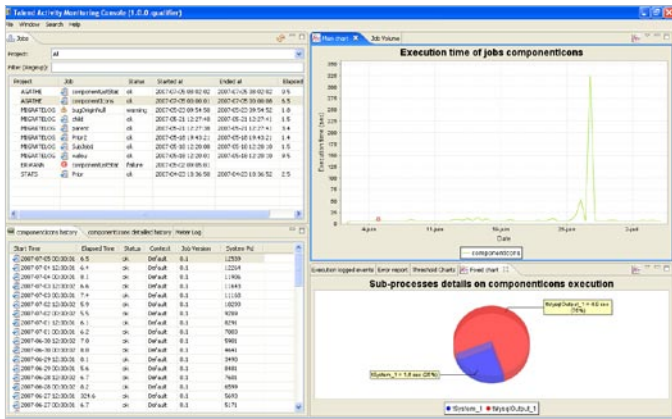
- **Distant Run** enables the remote execution of jobs on specified systems.

This can be extremely useful for testing jobs in the same configuration as the production environment, or on different operating systems, or for simply running jobs upon request on specific systems—without going through a complex deployment procedure.

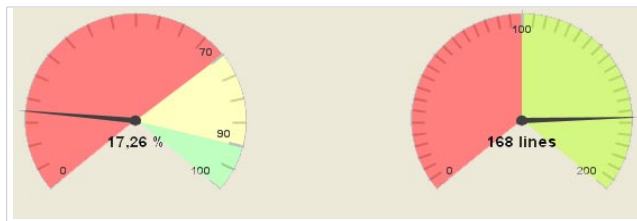
### Execution monitoring

Talend Integration Suite provides advanced monitoring capabilities that enable centralized supervision of all integration processes.

- The **Activity Monitoring Console** monitors job events (successes, failures, warnings, etc.), execution times and data volumes through a single console, which is available as a stand-alone environment or may be fully integrated to Talend Open Studio. With customizable indicators and thresholds, the Activity Monitoring Console provides a high-level view that can drill down into individual jobs.



- The **Activity Monitoring Dashboard** is a more advanced, Web-based version of the Activity Monitoring Console that can be accessed easily through a Web browser, and provides real-time gauges and status indicators. The Activity Monitoring Dashboard also provides a business-model orientation, enabling business stakeholders to view both the current status and historical data of any job.



### Technical Support

Staffed by technical experts who are directly involved with Talend’s Research & Development Organization, Talend’s Technical Support Centers provide prompt, effective, high-quality support services to Talend Integration Suite subscribers.

Talend offers three levels of technical support:

#### Silver Support

For all important projects, Silver Support provides:

- Guaranteed response time
- Automatic notification of updates and bug fixes
- Access to the support forum and bug tracker
- Access to online tutorials
- Discounts on training sessions and expert consulting

#### Gold Support

For all mission-critical projects, Gold Support provides all the features of Silver Support, plus:

- Faster guaranteed response time
- Guaranteed diagnostics turnaround times
- 24-hour access
- Unlimited incidents

#### Platinum Support

Users subscribing to Talend’s Quality Insurance program may become eligible for Platinum Support, which includes all the features of Gold Support, plus:

- Phone support

Subscription to support services is per individual user (per “developer seat”).

“Our goal was to preserve the autonomy of all the laboratories, which have their own IT departments, while also offering consistent global services. Talend Integration Suite fit because it is very robust and has a graphical interface that makes it easy to map out the data flows. Its open source nature enables us to keep control of the entire process.”  
Pierre-Eric Menuet, Eurofins

Talend’s technology and business vision shatters the traditional proprietary model by providing the flexibility required to meet the data integration and quality needs of all organizations, regardless of their size, level of expertise, or budgetary constraints.



More Information:  
[www.talend.com](http://www.talend.com)  
[info@talend.com](mailto:info@talend.com)